

TriView Sleeve™

Marker Post

Fact Sheet

Part# TVFS



Secured with Drive Rivet
(Not Included)

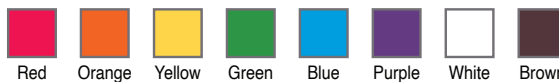
Slide Over U-Channel Post
(Not Included)

The TriView Sleeve™ is a simple version of the standard TriView®. It comes with the high visibility and durability of our regular version, but without the TriGrip Anchor or Flex PLUS rod. It's commonly placed over U-channel posts or round pipes to improve visibility (and save the cost and labor of repainting). In areas with hard or rocky soil, the combination of a U-channel post and the TriView Sleeve™ is the best way to have high-visibility markers with easy installation.

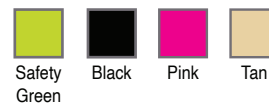
Description:

- Standard Lengths: 48" | 54" | 60" | 66" | 72" | 78" | 84" | 90"
- Triangular post with colored cap
- Two sides = 3.1" | One side = 3.0"
- 360-degree visibility
- Made with UV-stable RhinoPoly® – our proprietary blend of thermoplastics
- Pre-punched 3/8" hole for installation
- 10-Year Warranty

Standard Post Colors



Alternative Post Colors



Standard Cap Color



Black

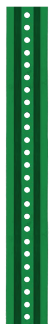
Alternative Cap Colors



Installation
Video

Options & Add-Ons

U-Channel Posts



Painted Green
Part# UCG



Galvanized*
Part# UCZ



Powder Coat
Yellow*
Part# UCY



Drive Rivet
Part# Drive Rivet



TriView Test Station
Retrofit Kit
Part# TSRF_____



Reflective Bands
• 1" RB1____-TV
• 3" RB3____-TV

**GENERIC
& CUSTOM
LEGENDS
AVAILABLE**

Decals Sold Separately