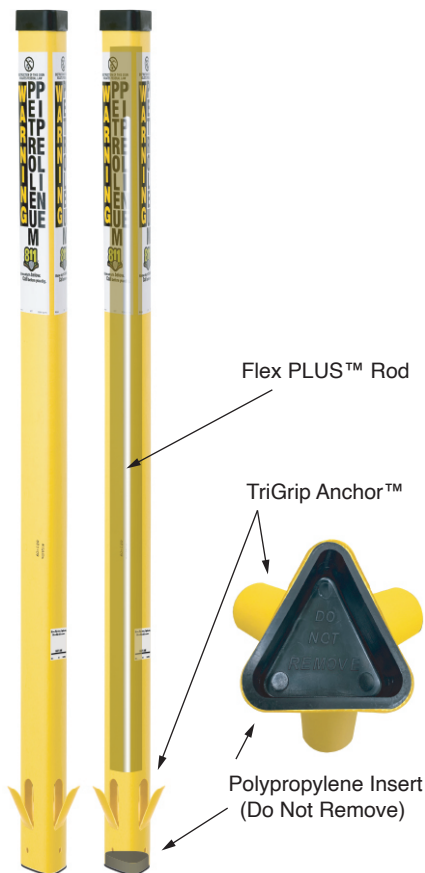


TriView® Marker Post

Fact Sheet

Part# TVF

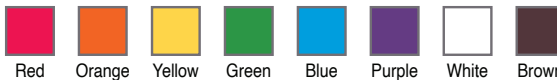


The TriView® is the industry's best marker for creating awareness of buried facilities and reminding excavators to call before they dig. The triangular profile combined with the internal Flex PLUS™ rod makes the TriView® the most durable marker post available. In areas where livestock, wildlife, or vehicles are likely to impact signage, the TriView® will rebound to its upright position where other posts fail.

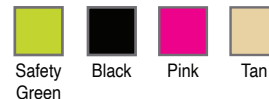
Description:

- Standard Lengths: 48" | 54" | 60" | 66" | 72" | 78" | 84" | 90"
- Triangular post with colored cap
- Two sides = 3.125" | One side = 3.0232"
- 360-degree visibility
- 18" bury-depth decal included
- Made with UV-stable RhinoPoly® – our proprietary blend of thermoplastics
- Internal Flex PLUS™ Rod secured with Polypropylene Insert friction-fit to bottom.
- Patented TriGrip Anchor™ for locking post into ground
- 10-Year Warranty

Standard Post Colors



Alternative Post Colors



Standard Cap Color



Black

Alternative Cap Colors



Red Orange Yellow Green Blue Purple White



Installation
Video



Impact
Video

Options & Add-Ons



TriView
Soil Anchor
Part# TVFA



TriView
Anchor Driver
Part# TVAD-300HD



TriView Test Station
Retrofit Kit
Part# TSRF_____



Reflective Bands
• 1" RB1S-TV
• 3" RB3S-TV

**GENERIC
& CUSTOM
LEGENDS
AVAILABLE**

Decals Sold Separately